

TRANSFORMING LIVES FOR 10 YEARS

Somerset Community Foundation

2011/12
Annual
Review

10 Years...

Think what
we could
achieve in
another ten?

10 years of transforming lives in Somerset

Over the past 10 years Somerset Community Foundation has become the leading independent funder for community-based causes in the Somerset, widely recognised for our ability to target funding to effective local organisations tackling the most pressing social issues in our communities. Since 2002 we have:

- Awarded over 1,000 grants worth £3.2m to a wide variety of local charities and community groups throughout Somerset, providing invaluable and irreplaceable support to the most disadvantaged, vulnerable and marginalised people in our communities.
- Built an endowment fund worth over £2.5m providing a source of funding to sustain the work of local voluntary organisations and meet the changing needs within our communities.
- Built a portfolio of over 40 'named funds', largely established by local families and companies, dedicated to tackling priority community issues.
- Secured the long-term future of almost £900k of dormant and 'at-risk' charitable trusts originally established to help vulnerable and disadvantaged people in Somerset
- Pioneered the award-winning Surviving Winter Campaign, which has so far secured over £2.5m across the UK to help the most vulnerable older people and other groups most affected by cold winter weather.
- Forged a unique partnership with Crispin School to develop the Raising Aspirations mentoring programme with the support of the Ninesquare Trust.
- Become one of the most successful counties in the delivery of the Localgiving.com initiative, securing over £110k of additional income for local charities.





The past year has been another of significant progress for our Community Foundation. Although, as our Chief Executive, Justin Sargent, notes, the challenges we, and those who depend on us, face are greater than ever.

I am pleased to report that in the year ended 31 March 2012 we gave financial assistance worth £430, 469 (compared to £382,859 in 2010/11), supporting the work of over 120 local organisations and, through them thousands of vulnerable, disadvantaged people in our communities (listed on pages 11-14). While we can and do take considerable pride in the scale and breadth of our grant making it is salutary to report that the needs from our community are far greater than our grants capacity. Our endowment, so important to the long term sustainability of the Foundation, grew from £2.1m to £2.5m during the year.

Michael Fiennes, our Vice-Chairman, who had been a Trustee since the inception of the Foundation, retired at the AGM, having completed the maximum period of nine years on our Board. We are all deeply grateful to Michael for his unstinting hard work and enthusiasm during this time.

Mark Saxton, a trustee for a number of years, was appointed as Vice-Chairman; he has been a source of great support to the Foundation and to me personally since taking on this role. I am pleased to be able to report that during the year Martin Kitchen and Andy Palmer joined us as trustees; both of them have already made a significant contribution in their respective areas of expertise. Ellie Anderson, who had been a valued member of staff for 4 years left the Foundation in June 2012 with our best wishes for her future career elsewhere.

I would like to take this opportunity to thank our President, our Vice-Presidents, my co-trustees, our staff, our many volunteers and all our donors and supporters for everything they have all given to the Foundation during the year.

Peter Wyman CBE, Chairman

"Our sincere thanks go to all who gave to the Foundation without whom none of this would have been possible."





Ten years ago, a small group of community leaders came together with the support of HM Lord Lieutenant, Lady Gass, Somerset County Council and a small number of local businesses.

They established the Somerset Community Foundation, a new charity to channel funds into the heart of our local communities.

Much has changed in the intervening years, but our communities still need the charities and groups that serve them...and they – perhaps more than ever – need us.

In the early days the Government's Local Network Fund provided us with an opportunity to establish a professional grant-making programme, latterly joined by European Social Fund and Sport Relief-funded programmes. We established an office, first in Dinder and then in the heart of the Somerset Levels at Godney. More importantly we benefitted from excellent staff committed to helping bring about positive change in our villages and towns.

By 2006 we had distributed over £1 million in grants, but we were a far cry from being a community foundation.

In those early days over 90% of our grants came from short-term, public-sector contracts. Of course it helped us establish our systems and processes but it was not sustainable.

It is with great pleasure that we can report that in our 10th year we expect over 90% of our grants to come from funds established by local families, businesses and trusts who share a common commitment to making life better for those less fortunate on their doorstep. Indeed, from managing 2 or 3 large funds, our grant-making is now spread across more than 40 funds. Incredible people who see and feel the need for change in their communities are working with us – and, more importantly, each other – to make that change a reality.

"This is what it means to be a community foundation – one that is built by the community, for the community."

In a year when the word 'legacy' has at times dominated the airwaves, our endowment remains a potent source of help today and for future generations. It has grown by over £0.5 million in the past year to over £2.5 million, including 3 new 'named funds'. It is a start, but we must continue to focus our efforts and our aim is to reach £20 million by 2022.

And we have diversified. In our 2010/11 report we introduced three initiatives that gave a wider range of people the opportunity to give in new

cont >>



"Being alone and partially disabled, my life was pretty grim. I then joined the Live at Home Scheme, now I go places and meet people, make new friends. I am living and laughing again."

+ + + + +
Wincanton Live at Home Scheme

fulfilling potential



ways. During 2011/12 these have begun to fulfil their potential. Our Surviving Winter campaign was picked up across the UK by community foundations, supported by Saga and championed in the national press by countless celebrities. We raised over £60,000 locally and over £2.5 million nationally. Our role as the pioneers and leaders behind the campaign was recognised when we were awarded the Civic Society Award for Grant-making in partnership with Community Foundation Network.

This time last year Localgiving.com had just been launched in Somerset by the Foundation. It is a simple mechanism to give local groups the change to fund-raise online to give donors the chance to channel smaller donations directly to a cause that matters to them. With the help of Government match funding, local groups raised over £110,000 through the website.



And finally our Raising Aspirations mentoring scheme started in Crispin School, with 40 mentors providing one-to-one support to pupils in Year 7. The early signs are that this is bringing significant benefits to both the pupils and the mentors and we will be continuing the programme with the support of the Ninesquare Trust.

We hope, as you read this report, you feel inspired. Inside the back cover we gaze into the future, setting out some of the challenges facing Somerset in the next decade as well as some of the opportunities. If you feel you can and would like to make a difference locally we may be able to help you and we have listed 10 ways you could become involved with us at the Somerset Community Foundation.

Justin Sargent, Chief Executive

The grant has enabled us to provide outdoor physical activities which has got more young people into taking part in physical activities – which is wonderful!

+ + + + + + + + + + + + + + +
Outdoor Challenge

The lives of many young people in Woolavington are restricted by the poor transport links and lack of services in the village. This project has brought excitement to their doorstep and stretched their imagination and energy.

+ + + + + + + + + + + + + + +
Woolavington Rural Activities Project

We are surprised to find out how our project is in demand! We have learners coming from Martock, Langport, Highbridge, Berrow, Burnham-on-Sea, Taunton as well as those from Bridgwater. Learning English reduces people's isolation, helps with employment and enables them to take a more active role.

+ + + + + + + + + + + + + + +
ALFFFA (Akbyan: League of Filipinos, Friends and Families)



Being alone and partially disabled, my life was pretty grim. I then joined the Live at Home Scheme, now I go places and meet people, make new friends. I am living and laughing again.

+ + + + + + + + + + + + + + + Wincanton Live at Home Scheme

The Club is really good for the kids to come along to belong and get fit. The coaches encourage discipline and stamina, both body and mind. They also come along for fun!

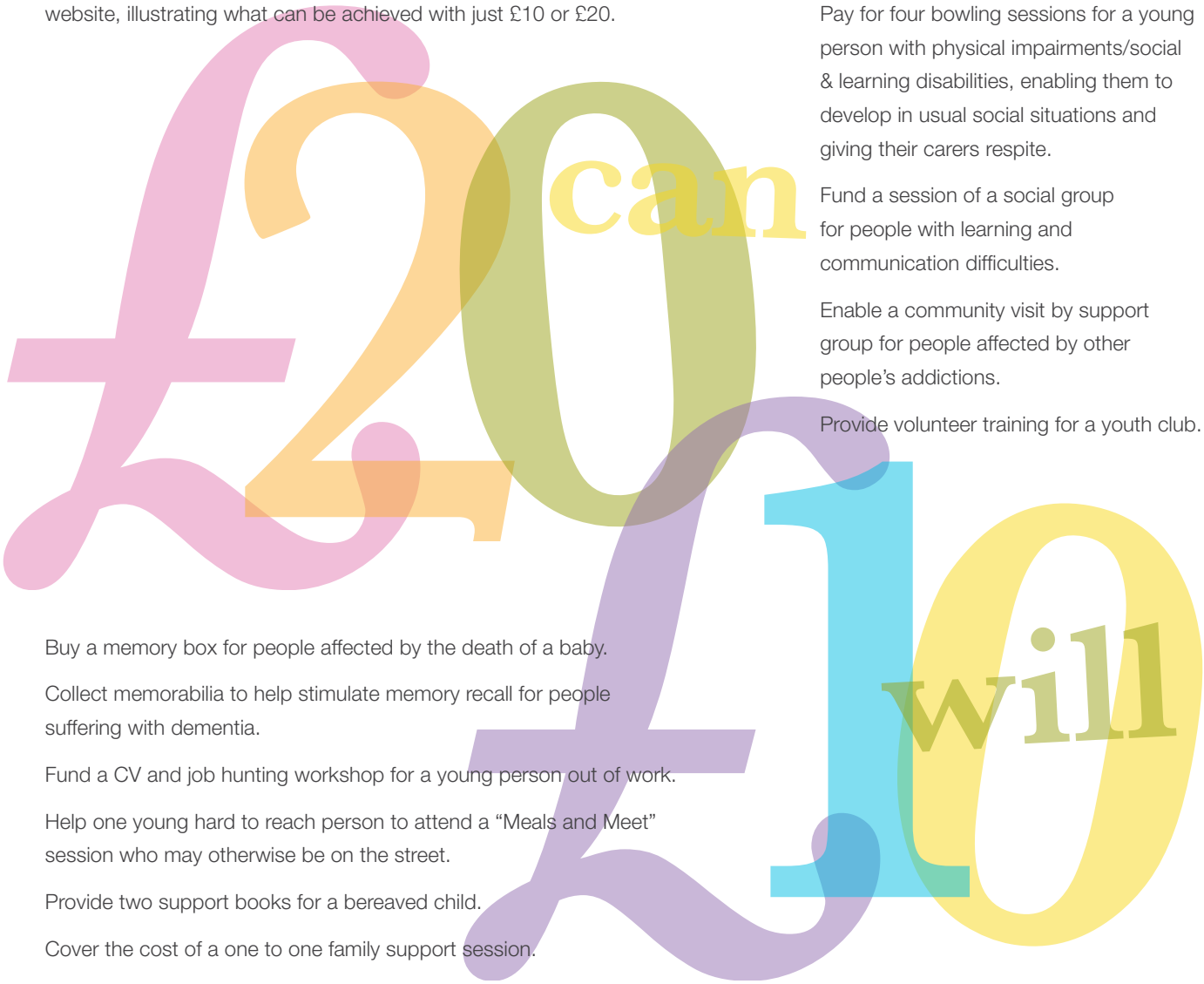
+ + + + + + + + + + + + + + + Street Non Contact Boxing Club

Carers report that their clients look forward to their visits to Wimbleball and have witnessed several regaining their confidence after being introduced to an activity where they can compete on an equal footing with non-disabled people.

+ + + + + + + + + + + + + + + Wimbleball Sailability

We often say that a small grant can make a big difference in the hands of a local group, but what does that mean?

Here are some examples, drawn from groups registered on the Localgiving.com website, illustrating what can be achieved with just £10 or £20.

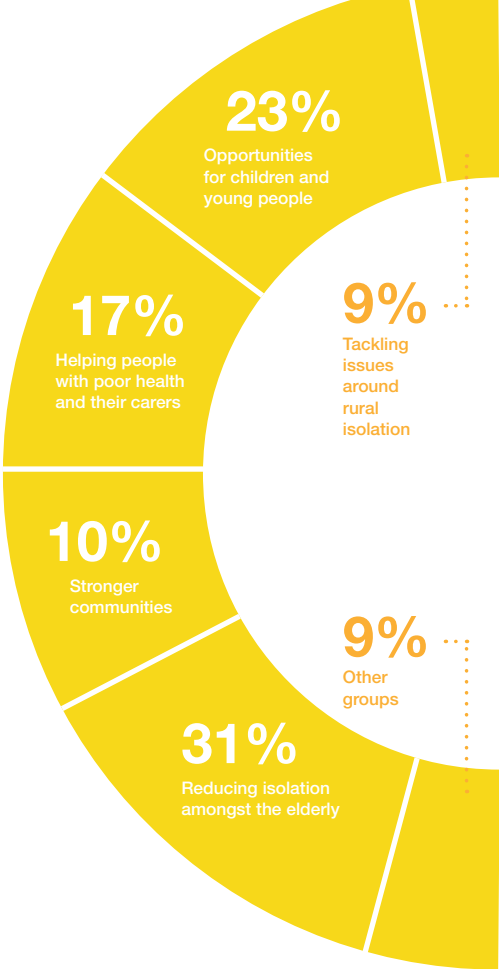
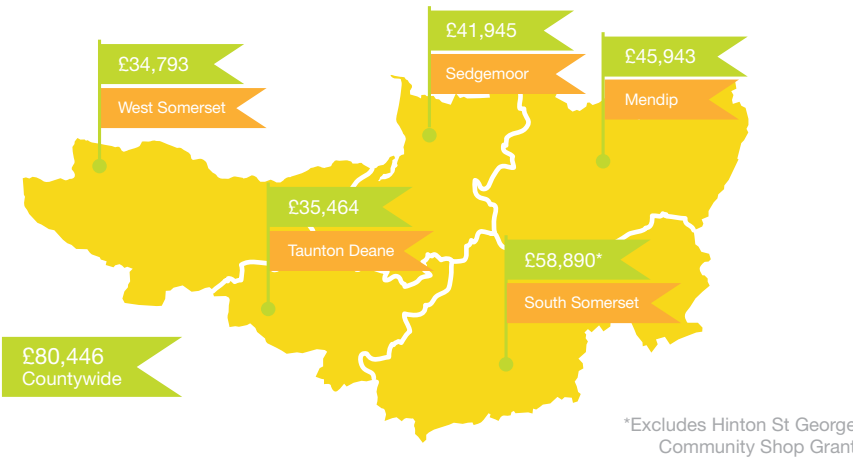


Over the past year we have continued to support a large number of small voluntary organisations throughout Somerset, tackling some of the most difficult issues people in our communities face.

In total we distributed £360,981 in grants to local charities, community groups and individuals reaching throughout Somerset. Our average grant to organisations was just over £2,200. Many of the groups received support from the Foundation for the first time. By the end of March 2012 we had awarded over 1,000 grants worth almost £3.2 million. This track record means that we have unique experience of reaching and funding grassroots organisations in Somerset. In addition the introduction of Localgiving.com has provided a new way for the Foundation to connect donors with local charities, distributing £61,941 directly during the year.

Where did our grants go?

We always aim to spread our funding as evenly as we can across the county, and our track record since 2002 reflects this. The map below shows how funding to local charities and community groups was distributed across our five districts. Grants worth £80,446 were awarded to charities working across more than one district.



Who did we help?

The distribution of grants continues to reflect our strategic priorities of:

- Improving opportunities for disadvantaged young people and adults.
- Supporting vulnerable and frail older people and their carers
- Supporting communities affected by isolation and loneliness

Grants 2011/2012

| Group Name | £ | Funding for ... | Area |
|--|--------|---|------|
| 10 Parishes Community Car Share Scheme | £1,500 | Start up costs for community car share scheme in rural area | TD |
| Acorn Project | £880 | Self help drop in project for people recovering from mental health illnesses | TD |
| Age UK | £2,342 | Building capacity in voluntary groups | C |
| ALFFFA | £2,000 | English language training | S |
| All Saints School Association (ASSA) Dulverton | £1,000 | After school sports activities | WS |
| Arthritis Care (Bridgwater) | £422 | Outings for members with limited mobility | S |
| Ashill Village Hall Committee | £1,400 | Activities and meals for senior citizens | SS |
| Avalon Amateur Boxing Club | £500 | Sports club offering opportunities to young people | M |
| Bridgwater & District Fibromyalgia Support Group | £1,960 | Support group for people suffering the symptoms of Fibroymyalgia | S |
| Burnham and Highbridge Stroke Club | £3,000 | Outings and activities for people who have suffered a stroke and their families | S |
| Carers UK - East Somerset | £250 | Social activities for carers | M |
| Central Somerset Outdoor Learning Partnership | £4,060 | Family forest school activities | SS |
| Chard and Ilminster Boxing Club | £540 | Sports club offering opportunities to young people | SS |
| Chard WATCH | £3,570 | Social activities, advice & guidance for vulnerable older people | SS |
| Chilcompton Golden Hour | £250 | Social activities for over 50s | M |
| Chilcompton Village Hall | £100 | Social activities and meals for senior citizens | M |
| Childrens World | £2,616 | Video workshops for students with emotional and behavioural difficulties | M |
| Conquest Centre | £2,072 | Shower facility for young people and adults with disabilities | TD |
| Count Me In | £672 | Music based activities for young people with learning and physical disabilities | M |
| Crowcombe Pre-School | £943 | Pre-school activities in rural area | WS |
| Daffodil Club | £2,000 | Training for volunteers to help domestic abuse victims | S |
| Drayton Senior Citizens | £350 | Support for social activities schedule | SS |
| Dulverton & District Young Peoples Project | £5,000 | Summer activity programme for young people in rural area | WS |
| Dunkery Pre-School | £3,462 | Running costs for rural pre school | WS |
| Elim Connect Centre | £2,072 | Provision of washing facilities for homeless people | M |
| Evercreech Friendship Club | £572 | Social activities for local elderly people | M |
| Evercreech Youth Club | £5,000 | Youth club activities | M |
| Exmoor Young Arts | £4,180 | Creative art group in rural West Somerset for children | WS |
| Farmlink Education Ltd | £5,000 | Farm visits for disadvantaged children | C |
| Friends of Greenfylde School | £1,000 | Swimming pool activities for wider community use | SS |
| Friends of Somerset Young Carers | £1,055 | Weekly sports sessions for young carers | S |
| Frome and District Day Centre | £2,222 | IT equipment and training for older people at Active Living Centre | M |
| Frome Association for Holiday Activities | £1,072 | Play equipment for children with disabilities | M |
| Frome Autistic Support Team | £1,060 | Trips and activities for children with an autistic spectrum disorder, | M |
| | | their siblings and parents | |
| Frome Collegians Football Club | £658 | Community youth football club for children from low-income families | M |
| Gems Scrapstore | £4,060 | Creative reuse of waste resources for the benefit of communities | M |
| Glastonbury & District Burma Star | £1,000 | Outings and activities for Burma conflict veterans and their families | M |
| Good Fellowship Club | £822 | Transport costs for members with special needs | SS |

| | | | |
|--|--------|---|----|
| Hamilton Greens Amateur Boxing Club | £5,000 | Sports club offering opportunities to young people | TD |
| Hamp Go-Getters Lunch Club | £572 | Activities for over 60's luncheon club based on Hamp Estate in Bridgwater | S |
| Heather Club | £2,522 | Social activities to promote speech and interaction for Stroke club members | S |
| Henhayes Centre | £5,872 | Needs analysis and action plan for elderly & disabled people | SS |
| Highbridge Dreamscheme | £1,906 | Reward scheme for young people carrying out community horticultural project | S |
| Home Start Bridgwater | £2,160 | Support group for families with children under five | S |
| In Touch Project | £5,000 | Support group for family members or friends affected drug or alcohol use | C |
| Isle Abbots Playgroup | £1,060 | Playgroup activities in rural area | TD |
| Langport & District Community Youth Centre | £2,007 | Outdoor activity programme for young people aged 11 to 18 | SS |
| Langport and Huish Senior Citizens Club | £1,572 | Outings and activities for senior citizens | SS |
| Langport Luncheon Club | £700 | Running costs and equipment for WRVS luncheon club | SS |
| Martock Youth Club | £1,572 | Activities for children and young people | SS |
| Mells Barn Socials | £720 | Transport costs for blind and partially sighted members | M |
| Milford Community Association | £2,792 | Training opportunities for local residents, including first aid and food hygiene | SS |
| Minehead Youth Theatre | £452 | Drama based youth activities for young people in West Somerset | WS |
| Moving Together in Somerset | £500 | Activities for young people with learning disabilities | TD |
| North Petherton Youth Initiative | £4,981 | Youth provision to help with the transition from primary to secondary school | S |
| North Taunton Partnership | £5,750 | IT equipment, community garden and activities in area of deprivation | TD |
| Options - Pregnancy Crisis Care Centre | £360 | Confidential and unbiased help for those facing an unplanned pregnancy or post-abortion stress | M |
| | | | |
| Outdoor Challenge | £2,715 | Outdoor activities for disadvantaged young people | S |
| P.A.L.S. (Pro Active Lifestyle and Swimming) | £8,380 | Water based activities for elderly and disabled people | WS |
| Phoenix Group for Carers | £1,272 | Support group for carers in Blackdown Hill incl. bereavement counselling | SS |
| QwesT FtM UK | £960 | Voice coaching and activities for female to male transsexual support group | TD |
| Railway Runabouts Pre School | £1,000 | Toys and equipment to create an outdoor classroom | TD |
| RECOOP | £1,250 | Health and social activities for older prisoners | M |
| (Resettlement & Care for Older ex Offenders & Prisoners) | | | |
| Ridgeway Hall Disability Group | £2,000 | Sport, craft and social activities for adults with physical disabilities | SS |
| Rockwell Green Wednesday Club | £3,262 | Weekly activities for over 60's in Wellington and Rockwell | TD |
| Royal Bath & West Show Sports for the Disabled | £1,560 | Disabled athletic events at Royal Bath and West Show | M |
| St John Fellowship | £822 | Outings and activities for elderly members of St Johns Fellowship | WS |
| Sedgemoor Citizens Advice Bureau | £2,572 | Support for provision of Home Visiting service | S |
| Sedgemoor Community Partnership | £2,500 | Community hall providing activities around health and wellbeing | S |
| Shepton Mallet U3A | £672 | Educational projects for people no longer in employment | M |
| Shepton Mallet Autism Support Group | £1,560 | Days out for children with autism and their families | M |
| Shooting Stars Youth Club | £300 | Drop-in youth club based in deprived area of Shepton Mallet | M |
| Somerset Community Care Matters | £1,472 | Advice, advocacy and casework under community care legislation for the vulnerable | C |
| Somerset Levels RDA Carriage Driving Group | £5,000 | Replacement horsebox for group providing therapy, achievement and enjoyment to people with disabilities | M |
| | | | |
| Somerset Samaritans | £3,491 | Volunteer travel expenses | TD |
| South Petherton 60 Club | £500 | Transport and social activities for older people | SS |
| South Somerset Disability Forum | £2,417 | Running costs and equipment for group actively working to provide better access for disabled people | SS |

| | | | |
|---------------------------------------|--------|---|----|
| Sparkford Evergreen Club | £572 | Projection equipment for meetings\social events for people in isolated community | M |
| Speak Up Somerset | £2,060 | Website development training and activities for group promoting recovery from mental health illnesses | C |
| St Francis Youth Club | £1,063 | Holiday activities for children in deprived area of Bridgwater | S |
| STAR | £950 | Music, arts and recreational activities for disadvantaged young people | C |
| Stoke Youth Football Club | £672 | Sports equipment and training for volunteer coaches | SS |
| Street Non Contact Boxing Club | £1,321 | Training for volunteer coaches for community youth sports club | M |
| Streetspace Youth Project | £1,812 | Training and development of young people in community action and cultural awareness projects | SS |
| Sugar Water Curls Dance Group | £1,197 | Dance sessions for the over 50s | S |
| Tannery Active Living | £2,310 | Singing workshop for elderly and isolated people | S |
| Taunton BeeKeepers Association | £1,000 | Community educational resources | TD |
| Timberscombe Turtles | £660 | Pre-school activities in rural area | WS |
| Tone Dance | £2,000 | Dance for health sessions for over 50's in Active Living Centres | TD |
| Wells Active Living Group | £1,572 | Transport costs for disabled and elderly members | M |
| Wells Vineyard | £3,372 | Garden project engaging homeless people with mental health problems | M |
| West Buckland Friendship Club | £610 | Activities and outings for senior citizens | TD |
| West Huntspill Allotment Society | £4,300 | Community allotment project | S |
| West Huntspill Mini Day Centre | £256 | Activities for senior citizens | S |
| WHEELS | £3,000 | Community car scheme providing transport for the elderly and disabled | WS |
| WHERE | £4,779 | Buddy system working with people with physical and mental disabilities | TD |
| Wimbleball Sailability | £6,072 | Sailing activities for people suffering from physically and mental ill-health | WS |
| Wincanton Live at Home | £5,000 | Befriending service for elderly people in Wincanton | SS |
| Woolavington Rural Activities Project | £4,454 | Weekly sports and outdoor activities for young people aged 8 – 19 | S |
| Yeovil Day Centre | £2,000 | Lunchtime hot meals service | SS |
| Yeovil Street Pastors | £1,000 | Caring and helping project in Yeovil town centre | SS |
| Yeovil Visually Impaired Bowls Club | £1,710 | Transport costs, venue hire, computer and screen reader for visually impaired | SS |
| Young People Frome | £5,580 | Projects and activities for young people, including a community youth cafe | M |

Key

| | |
|-------------------|------------------|
| M Mendip | TD Taunton Deane |
| S Sedgemoor | WS West Somerset |
| SS South Somerset | C Countywide |

Special Projects

Hinton St George and Locality Rural Community Services

In 2011 the Hinton St George community approached us to ask if we would create a fund from local donations to support the development of a community-owned village shop. £63,500 was granted to Hinton St George and Locality Rural Community Services to purchase the shop on behalf of the community.

Somerset Youth Volunteering Network (SYVN)

In 2009 SYVN were awarded a £28,500 Comic Relief grant managed through Somerset Community Foundation. Their Action Sparks project was based in a vacant shop in Yeovil which they turned into somewhere to help young people to develop their skills and spark action in their community. This was supplemented by outreach in more rural areas. During 2011/12, the second installment of £14,250 was awarded to SYVN.

Eagle House Grants

At the end of 2010/11, the near-dormant Eagle House Trust was transferred to our endowment fund. The trust was established to give financial assistance to children and young people in Somerset, and Bath and North East Somerset, North Somerset, Bristol and South Gloucestershire who have been looked after in foster/residential care or have received support from Children's Social Care at some point in their lives. Small grants are given in consultation with care workers to help break down the barriers these vulnerable young people face in their lives. 26 grants worth £6,611 were awarded.

Surviving Winter

During the 2011/12 winter £57,215 (including £3120 received on behalf of Quartet Community Foundation) was distributed to and through 13 local charities helping older people and other vulnerable groups cope with the impact of cold weather on the health and quality of life. For more information on this award-winning programme, please see page 22.

In some parts
of Somerset
over one-third
of children under
16 are living in
poverty



There are lots of reasons to be positive about the future for children and young people in Somerset. Most grow up in good health, supported by loving families and strong communities. Our job at the Foundation is to make sure opportunities reach those from more disadvantaged backgrounds by funding the excellent work delivered by local charities and community groups.

Here are just three examples we supported in 2011/12:

Outdoor Challenge provides a wide range of outdoor activities to 120 young people from some of the most deprived areas of Bridgwater. These experiences help them build confidence and develop interpersonal skills. Some of the young people have even asked to lead sessions.

Street Non Contact Boxing Club was set up with the help of local police, in part to tackle anti social behaviour and crime in the town. 30 boys and girls attend after-school sessions to have fun, get fit, learn about discipline and have somewhere they belong to.

All Saints School Association (ASSA) in Dulverton raises funds to improve the learning environment of local children in a very rural area. Their remoteness means there are very limited opportunities for after-school activities, so ASSA themselves kick-started a range of activities from football training to dance classes which our grant has helped continue.

In addition to these groups, the Foundation also awarded 26 grants worth £6,611 from the Eagle House Trust Fund to help young people leaving the care system access opportunities to develop and grow.



In 2011, 57% of children in Somerset achieved five or more A*-C grades at GCSE (including maths and English). For children who receive free school meals, this reduces to 28.3%. Despite notable progress made in educational attainment locally, improvements have been slower than national trends.

Realising that many of Somerset's pupils, particularly those from low income families, were missing out on opportunities to fulfil their potential we embarked on our ambitious **Raising Aspirations** programme.

With support from the Ninesquare Trust, the Foundation formed a partnership with Crispin School in Street to pilot a mentoring programme using volunteers from the local business and wider community. We have also commissioned the University of East London to monitor and evaluate the impact of the programme.

In the first year of this project:

- 37 volunteers from the local community have been recruited and trained and are currently mentoring pupils from Years 7 and 8.
- Evaluation by the University of East London commenced to ensure a rigorous and academic approach to assessing the impact of the programme.
- A discussion event hosted by the Royal Society of Arts (Taunton group) and Somerset Community Foundation was held at Queens College, Taunton in June bringing together expert speakers and a diverse range of stakeholders to debate the causes of, and solutions to, tackling underachievement by local young people.
- Lord Digby Jones Bt addressed a business audience at the Castle Hotel in Taunton, outlining his vision for helping the next generation.

"I have thoroughly enjoyed being part of the programme and I am looking forward to resuming the sessions in September. It has provided me with a great deal of learning as a parent!"

Older people play an incredibly important role in our communities, supporting their families and contributing to their communities.

However, an ageing population also means a growing pressure on statutory and, increasingly, community-based health and social care services.

The voluntary sector provides a range of support – transport services, support groups and benefits advice – to older people and their carers throughout the county, including:

Reminiscence Learning works with people with dementia and their family carers. They successfully applied to Somerset Community Foundation to produce a book called 'Archie's Story' to explain to people of all ages the signs of dementia, how it can affect an individual and how to help that person feel part of a loving family and community.

PALS (short for Pro-active Lifestyle Water Activities) provide water-based exercise by trained instructors to help up to 30 adults with disabilities and chronic health conditions remain fit and healthy. Rising costs put the service under threat and as half their members rely solely on a state pension, raising their membership fee would simply mean they would exclude those who most need their help. Our grant has enabled them to keep their service affordable while seeking a longer term solution.

The Phoenix Group for Carers provides support to people in a caring role, ensuring they have the information and assistance to continue in their role through group and one-to-one sessions in the rural Blackdown Hills. They also provide bereavement support to carers who have lost loved ones.

In the past ten years the population over 80 years old has grown by 25%

Mr Moug from Wincanton received support from the Surviving Winter fund through our partnership with Yarlington Homes. In doing so, his Welfare Officer was also able to help him move on to the correct level of housing benefit, reducing his vulnerability to fuel poverty in the long-term.

Focus: Surviving Winter

In 2010 we were approached by a donor offering to gift us an amount equivalent to his winter fuel payment if we could ensure it was used to help a fellow pensioner struggling with the cost and impact of winter. From this simple idea has grown a national, award winning campaign which has raised over £100,000 locally and over £2.5m across the UK to help older people.

Community Foundations are in a unique role, able to raise funds across their geographical area and distribute through a range of local charities and organisations to those most in need of help. These local organisations frequently add considerable value to our support, for example by giving specialist advice on insulation, health and benefits.

Locally we have worked with a wide range of organisations, from housing associations to Citizen Advice Bureaux to Rotary Clubs. What they all have in common is the ability to find and help those who need a helping hand to get through the winter in comfort, safety and dignity.

Last winter 9 organisations were able to help 290 older people with direct payments. All try to get by on low incomes, many with chronic health problems or living in poor housing which is hard and expensive to heat. In addition we awarded 5 grants to groups providing essential support including community transport, lunch clubs and other self-help groups.

"We've used the money to provide lunch clubs for elderly people. This week we have served over 60 dinners in three clubs across Bridgwater."

"Thanks for putting the payment in so very quickly, we didn't expect that. It has come in very handy for the heating. It makes a big difference, especially to my arthritis."



In June 2012, Somerset Community Foundation and Community Foundation Network were jointly awarded the national 'Charity Award' in the grant-making category for inception and delivery of the Surviving Winter campaign.

Between 2009 and 2011 figures from the NHS show there were **over 500** winter-related deaths in Somerset

It is estimated that at least **1 in 7** households in Somerset are occupied by a pensioner **living on their own**



People of all ages in all communities can become isolated. In some cases it is a consequence of living in small rural communities without access to local services or transport to take you to where you need to be. In other cases it might be because of an illness or disability – physical or mental – or their family has moved away, or simply because someone is ‘different’.

Fortunately there is a wide range of local charities and community groups reaching out to help people cope with and overcome the barriers to a more fulfilling and inclusive life. In this year of the London Olympics, we have highlighted three projects that could represent one version of what ‘legacy’ means:

Every week **Wimbleball Sailability** give nearly 80 physically and mentally disabled clients of all ages the chance to go sailing in specially designed boats. Not only is it a chance to do something many of us would take for granted, it also gives many a chance to find new friends, build confidence and self belief.

The **Woolavington Rural Activities Project** provides facilities and services for local children and young people in one of the most deprived villages in Somerset. Their options are restricted by poor and expensive transport links and a lack of services in their community. To help overcome this rural isolation, WRAP established a weekly outdoor activity club and over 50 young people participated in a range of health outdoor activities, including visits to specialist activity centres.

Shepton Mallet Autism Support Group helps not only the children with Autism-spectrum disabilities, but also their parents and carers by providing mutual support and by putting on activities for them such as going on group outings together.

Localgiving.com gives small grassroots charities the opportunity to set up a simple webpage to receive online donations and increase their profile in their local community. Crucially it gives donors the chance to search geographically for projects addressing the causes they care about, on their doorstep.

Over 110 Somerset groups were recruited by the Foundation in the past 12 months to join this growing online community and benefit from this fantastic fundraising opportunity. We supported them with training and advice to help them make the most of the opportunity.

Government-backed match-funding promotions in December 2011 and March 2012 generated in excess of £110,000 of additional income to these charities and community groups, connecting them to new donors in new ways, fit for the 21st Century.



'I cannot believe we did so well! THANK YOU for your help and advice, this unexpected money could not have come at a better time.' Cathy Mercer, Charity Co-ordinator at Escape Support Group

To find out more, visit the localgiving.com page on our website, or contact Karen Collins on 01749 4344949 or karen.collins@somersetcf.org.uk

“Anyone can be a ‘Secret Millionaire’, that is, anyone can take a moment to find out who is making a difference in their community. There are hundreds of thousands of small charities and community groups doing amazing work throughout the UK. It could be £5 or an hour of your time – whatever you can give – it will make a difference.”

+++++ Marcelle Speller OBE, Founder of Localgiving.com, and a ‘Secret Millionaire’

local giving





"I'm really pleased with the outcome of the Challis project. It is very much what I had in mind when I set up the fund. It's simple feedback like this with users comments that make it all worthwhile!"

+ + + + + + + + + + + + + + + +
David Price, Fund-holder

funding a future

Our grant making programme is made possible through funds managed by the Foundation, the majority of which are made available to the county through the commitment of local families, individuals and trusts.

| | | |
|-------------------------------------|--------------------------------------|--|
| Angela Yeoman Fund | Hydrex Fund | Sir John Wills Memorial Fund |
| Beacon Fund** | John and Celia Bonham Christie Trust | Somerset Fund for the Deaf and Hard of Hearing* ** |
| Christopher and Heather Virgin Fund | John and Dorothy Ball Fund | Somerset Giving Fund |
| Christopher Tanner Memorial Trust | King James Exhibition Trust | Somerset Grassroots Grants Fund |
| Clarke Willmott Fund** | Long Sutton House | Somerset Guardians |
| Comic Relief | McGreevy Charitable Trust Fund | Somerset Masonic Fund |
| Courage Family Fund | Medlock Fund* ** | Somerset Restorative Justice Fund |
| David Price Fund** | Myakka Fund | Somerset Smoke Free Fund* |
| Donald Lake Memorial | Party Packs Fund | Summerfield and Tauntfield Fund** |
| Grassroots Grants | Perry's Recycling* ** | Surviving Winter Fund |
| Eagle House Trust | Peter Wyman Fund | TS5C Healthy Living Fund |
| EDF neighbourhood fund | Philip Gibbs Fund | WCS Pickford Trust |
| Field House Trust | Pilkington Fund | West Somerset Relief Fund |
| Grave Family Fund** | Rural Fund | Yeovil Town FC Fund |
| Hector Tanner Memorial Fund | Shoon Fund | |

** new for 2011/12*
*** received match funding from the Community First Endowment Match Challenge*

If you would like to find out about setting up a fund or benefitting from the Community First Endowment Match Funding scheme, please contact Justin Sargent on 01749 344949, justin.sargent@somersetcf.org.uk

We would like to thank everyone who has made a donation or supported us in other ways. Your generosity makes a big difference to people's lives in Somerset. Unfortunately, there is not sufficient space here to acknowledge all our Friends, Ambassadors and everyone else who has supported us, but every gift is very gratefully received.

Patrons

Mr N Gould & Mrs L Lawrence, Mr & Mrs B Grave, Mr R Lloyd, Mr & Mrs D Medlock, Mr D Price, Mr & Mrs T Smallwood, Mrs K Turner, Mr & Mrs C Virgin, Mr S Whitehead & Mrs G Hopkins, Mrs S Whittaker

Somerset Guardians

Amicus Law, Avalon Sciences, Bardon Aggregates, Bernard Herridge Trust/Hastoe Housing, Bhere Ltd, John & Celia Bonham Cristie Trust, Brewin Dolphin, Butler Tanner and Dennis, Mr R Case CBE DL, CETSAT, Church House Investment Management, Churton Inge Associates, Enmore Park Golf Club, Mr Michael Fiennes, Golledge Electronics Ltd, Gooch and Housego, Haynes Publishing, Holemoor Properties Ltd, Langdons Group, Mulberry, Old Mill Accountants, The Hon Mrs R Pease, Perry's Recycling, Poole & Co, Rathbones, Shepton Cider Mill, Somerset Chamber of Commerce, Summer Set Associates

Other thanks

Mr & Mrs N Barber, Mr Gervase Channer, Comic Relief, Community Foundation Network, Crispin School, Dickinson Family Trust, Michael Eavis, EDF Energy, Fairfield Charitable Trust, Mr N Francombe (Clarke Willmott), Mr R Hand, The Lodge of Love and Honour, Lucinda Jackson and Rotary Club of Glastonbury, Mr S Jacobs, Localgiving.com, Magnox Electric Ltd, The Medlock Charitable Trust, Michelmores Solicitors, Mid Somerset Series Newspaper, Nani Huyu Charitable Trust, NHS Somerset, The Ninesquare Trust, Rathbones, Royal Bath and West Society, Rt Rev'd Peter Price The Bishop of Bath and Wells, Smith and Williamson LLP, Somerset County Council, Somerset Life, Wells Cathedral, Western Daily Press, Western Gazette, Mr P Wyman, Yarlinton Housing Group...and our all our Raising Aspiration Mentors



Looking ahead to the next ten years

Looking ahead over the next ten years, we can anticipate that the majority of people in Somerset will continue to enjoy a high quality of life.

However there will remain a significant number of people – often hidden from view – facing great disadvantage and deprivation in their lives.

Some of the issues we can expect to be addressing over the next decade include:

- Education: despite some improvement in recent years the gap in attainment between those from low-income households and other students remains too wide. If schools, education authorities and the whole community do not respond, another generation will not fulfil their potential.
- Unemployment: while still below national averages unemployment is rising faster in Somerset than across the UK as a whole. We will need to find ways to ensure those who have never been employed are equipped and ready to respond to employment opportunities when they arise and we will need to help those who find themselves unemployed after – in some cases – many years of productive working lives.
- An ageing population: Somerset has one of the fastest growing populations of older people. In the past ten years the number of people over 65 have increased by 15% compared with an overall population increase of 6.5%. By 2021 it is estimated that 11,500 people in Somerset will be suffering from dementia compared with approximately 7,600 today.
- Fuel Poverty: While the Government's Green Deal may offer some additional help, it seems likely that people on low incomes living in poor housing and/or dependent on expensive fuel such as heating oil will be increasingly vulnerable in cold winters. This can affect people of all ages but the very young and very old are at greatest risk.
- Safety nets: At the time of writing, there has not been any detailed analysis of how proposed changes to the benefit system may affect people already living in poverty. One District Council has already noted that “there is no doubt that the changes in housing benefit levels will increase the pressure on homeless services”.

While this makes for bleak and uncomfortable reading, it is perhaps no coincidence that interest in philanthropic responses is also growing. Local charities and community groups are well-known for their ability to reach those most in need of help, for responding swiftly to changing needs and finding innovative and cost-effective solutions. They are being joined by a wider range of ‘social purpose’ organisations such as social enterprises and community interest companies.

As we enter our second decade, Somerset Community Foundation will continue to work with donors to target essential funds to the people and organisations working in our communities who will make the greatest difference, transform people’s lives and sustain strong communities.

“Never doubt that a small, group of thoughtful, committed citizens can change the world. Indeed, it is the only thing that ever has.” Margaret Mead



10

ways to help

Your Community Foundation

- BECOME A FRIEND** – become a grassroots supporter for only 48p a week and join a growing number of people supporting us regularly.
- JOIN THE GUARDIANS SCHEME** – designed principally for local businesses able to commit to at least £1,000 a year to support local communities.
- LEAVE A LEGACY** – a simple way to make a lasting difference to the people you care most about in your community.
- CREATE YOUR OWN FUND** – individuals and families, companies and other trusts can all establish ‘named funds’ within the Foundation and benefit from our knowledge of the local community.
- HOST AN EVENT** – help us raise the profile of the Foundation amongst those who could work with us to make a difference.
- MONITOR PROJECTS** – we need volunteers to help us monitor the impact of our funding so that we can understand better how we can help make a lasting difference.
- HELP OUR TEAM** – we also need volunteers to help us in our office and work alongside our core team.
- MENTOR A STUDENT** – become a ‘Raising Aspirations’ mentor and help a local young person fulfil their potential.
- PROMOTE** – tell people about the Foundation, whether they are looking for a more effective way to give locally or know a group in need of funding.
- TELL US** – we would like to know what is happening in your community and how we could help make a difference.

Somerset Community Foundation

President

Lady Gass, Lord Lieutenant of Somerset

Vice-Presidents

Lord Cameron of Dillington * Richard Case CBE DL

John Cullum * John Edney Chairman, Somerset County Council

Michael Fiennes * The Rt Revd Peter Price (Bishop of Bath and Wells)

Brig. Hugh Pye OBE * Angela Yeoman OBE, DL

Chairman

Peter Wyman CBE

Trustees

Katherine Armstrong * Claire Blackburn * Dr John Bowman CBE

Charles Clark * Chris Davies CBE * Sir Michael Ferguson Davie Bt

Paul Hake * David Jenkins * Martin Kitchen * Jane Lock

Andy Palmer * Mark Saxton * Stuart Thorne

Staff

Chief Executive Justin Sargent

Programme Manager Jocelyn Blacker

Localgiving.com Project Officer Karen Collins

Contact Us

Yeoman House,

The Royal Bath and West Showground,

Shepton Mallet, Somerset BA4 6QN

Tel: 01749 344949 **Fax:** 01749 823067

Email: info@somersetcf.org.uk

Website: www.somersetcf.org.uk

Join us on Facebook/Follow us on Twitter



Somerset-Community-Foundation



somerset_cf



Somerset Community Foundation

Registered Charity No. 1094446

Registered in England and Wales No. 04530979



quality accredited by
Community Foundation Network
to standards endorsed by the Charity Commission

Design by:

MERCER design

Print sponsored by:



Printed and bound by:



Butler Tanner & Dennis