

Hinkley Point C Community Fund

Guidance Notes for *Expressions of Interest* to the Strategic Grants Programme

Priority 1: Community Cohesion

Please read these guidelines carefully before completing the application form.

What is the Hinkley Point C Community Fund?

The Hinkley Point C Community Fund has been established under a 'Section 106' agreement with EDF Energy as part of their planning permission for building the new Hinkley Point C Power Station on the Somerset Coast. The purpose of the fund is to mitigate the intangible and residual impacts of the Hinkley Point C Project and associated developments on communities in Somerset through schemes, measures and projects which promote the economic, social or environmental well-being of those communities and enhance their quality of life.

The Hinkley Point C Community Fund will run alongside the Hinkley Point C Community Impact Mitigation (CIM) Fund, administered and managed by West Somerset Council until the funds in the CIM fund have all been spent.

Therefore it has been agreed that the Hinkley Point C Community Fund will focus on two grant programmes: small grants of up to £5,000 or organisations with an annual income of less than £100,000 (or in exceptional circumstances £10,000 over three years) and a number of strategic grant focuses.

Strategic grants will target specific impacts felt within Somerset communities as a result of Hinkley Point C. These impacts will be identified through consultation with communities and their representatives as the project progresses. It is likely that priorities within the strategic grants programmes will change as communities change therefore we anticipate it being an iterative process and advise applicants to continue to check the available grants programmes regularly.

What do we mean by residual and intangible impacts?

A residual and intangible impact is typically one that is difficult or impossible to measure but is (or likely to be) felt or experienced by people living in local communities or affects the local environment and community after other mitigation measures have been put in place.

If you would like to talk to us about your application prior to submitting it please contact us at any time.

What do we mean by Community Cohesion?

Community Cohesion is the first theme that has been identified as an impact of the Hinkley Point C development and projects. It is a broad ‘umbrella’ term that can be used to describe many aspects of community development and because of this we have identified two priorities within community cohesion to focus interventions at this time. These are outlined more fully in the ‘Call for Expressions of Interest’.

Who can apply for funding?

If you are able to demonstrate a charitable purpose you may be able to apply to the Hinkley Point C Community Fund grants programmes.

Normally we expect to receive applications from registered charities, community and voluntary groups, and social enterprises. Local councils can also apply, although we advise you to contact us before applying to discuss your application.

What can you apply for?

Your project should...

Avoid, reduce, improve or take advantage of the impacts you have identified

Show clear evidence of how your communities are being impacted by the HPC development

Be a capital or revenue project or a mix of the two

Last up to 3 years (if a revenue project)

Be of a scale and cost that is proportionate to the significance of the community impact. It is unlikely that large sums of money will be awarded to large projects in areas where a small number of people are impacted or where the community is not significantly impacted by the Hinkley Point C development.

What can't you apply for?

Projects that are non-charitable or unlawful

Projects that aim to improve the private property of an individual or private business.

Projects that aim to provide benefits for a single faith group or political party or that primarily promote religious or political beliefs.

Projects that exclude any particular group of people due to their race, religious or cultural beliefs or sexual orientation.

Projects that have already been completed.

Projects that are a statutory responsibility

Projects that could be reasonably considered to be offensive or disproportionately dangerous or disproportionately environmentally damaging.

Projects or activities which are directly opposed to EDF Energy's interests.

Projects that can be considered to be corporate sponsorship.

Projects that concern animal welfare.

THE APPLICATION PROCESS

There is a **two stage** application process for Hinkley Point C Community Fund Strategic Grants.

1. Submit an **expression of interest** through the Somerset Community Foundation website for the strategic programme you wish to apply to by the stated deadline. Most calls for expressions of interest will have a 6- 8 week window to receive applications.
2. All expressions of interest for the focus will be considered at the same time by the Hinkley Point C Community Fund Awards Panel. Applicants who most fit the priorities of the fund will be asked to submit a **full application** within **12 weeks**.

We aim to let you know the outcome of your application within 3 weeks of the deadline.

The Hinkley Point C Community Fund team are always available to support you as you prepare your application.

How will your application be assessed?

Those criteria **most** relevant to the Expression of Interest are highlighted in gold

Priority will be given to those eligible projects which:

- Provide us with evidence that people in the community are **experiencing, or are likely to experience, 'intangible and residual impacts'** from the construction of Hinkley Point C. By 'intangible and residual' we typically mean impacts that are difficult or impossible to measure but are (or likely to be) felt or experienced by people living in local communities or which affect the local environment and community after other mitigation measures have been put in place.
- Show clear evidence of how the project is **led, designed and /or supported by the affected community/communities** in the context of the specific grant programme you are applying to (e.g. community cohesion)
- Have been **identified as community priorities**, complement and/or support local authority plans and strategies and have been highlighted through community or parish plans. Your application will show support from the community.
- Show clear evidence of the ways in which your project will **meet the need you have identified and improve the economic, social and environmental well-being of those communities and enhance their quality of life.**

Your application will clearly show how you intend to avoid, reduce, improve, off-set or take advantage of the identified impact.

- Show that the project is complementary to, and will work in partnership with, other schemes, projects and measures, including those that form part of the wider mitigation of the Hinkley Point C development.
- Show that the applicant has a board or committee and/or a project delivery team in place who have the **appropriate skills, experience and diversity to deliver the activities successfully**. Careful consideration will be given to financial and project management and the financial sustainability of the project and organisation. Organisations must also have the appropriate policies in place to deliver their project e.g. safeguarding, health and safety, data protection and equal opportunities.
- Demonstrates **value for money** in terms of cost and effectiveness and has the potential to attract additional funding from other private and public sector sources where possible (or has already done so).
- Show how the planned activities will contribute to the **ongoing sustainable development of the community** now and in the future; and be part of its **legacy**.

Completing the Expression of Interest Form

If, having read the call for expressions of interest carefully you feel your project fits into the areas of community cohesion need that have been identified we hope that you will apply to the fund. If you are not sure, please do contact us to talk it through. Remember that if your project doesn't quite match the priorities now it doesn't mean it won't in the future as impacts will change and we expect to issue further calls for expressions of interest focussing on different community cohesion themes as well as different strategic focusses.

Registration

Once you have indicated that your project meets the two main eligibility criteria for this fund (it is for the benefit of one or more communities in Somerset and mitigates an intangible and residual impact from Hinkley Point C or its associated projects) you must submit your email address to receive an emailed copy of the expression of interest form.

If you do not receive it please check your spam email folder. It will come from the email address info@somersetcf.org.uk.

Section 1: Organisation Name and Address Details

Please provide the following information

- Name of Organisation
- Contact Details
- Details of Main Contact Person
- Date your organisation started
- Your type of organisation (you may tick more than one)
- The **approximate number of people** who use your services or facilities in your community (if you are an organisation intending to work with a number of communities please estimate the number of people you **currently work with** within these communities)
- Let us know if there are **any restrictions on the use of your organisation's facilities** (for example if you can only access them at a certain time)

Section 2: Details of Proposed Project

Please include the name of the project and indicate the area where the majority of the people who benefit will come from. The four questions are designed to elicit your case for support for your application.

Where possible make sure you back up your answers with evidence. This evidence could include data, stories and quotes from members of your community or references to your community plan or local authority strategy. If you are invited to submit a full application we will require you to provide more detailed evidence as part of your proposal.

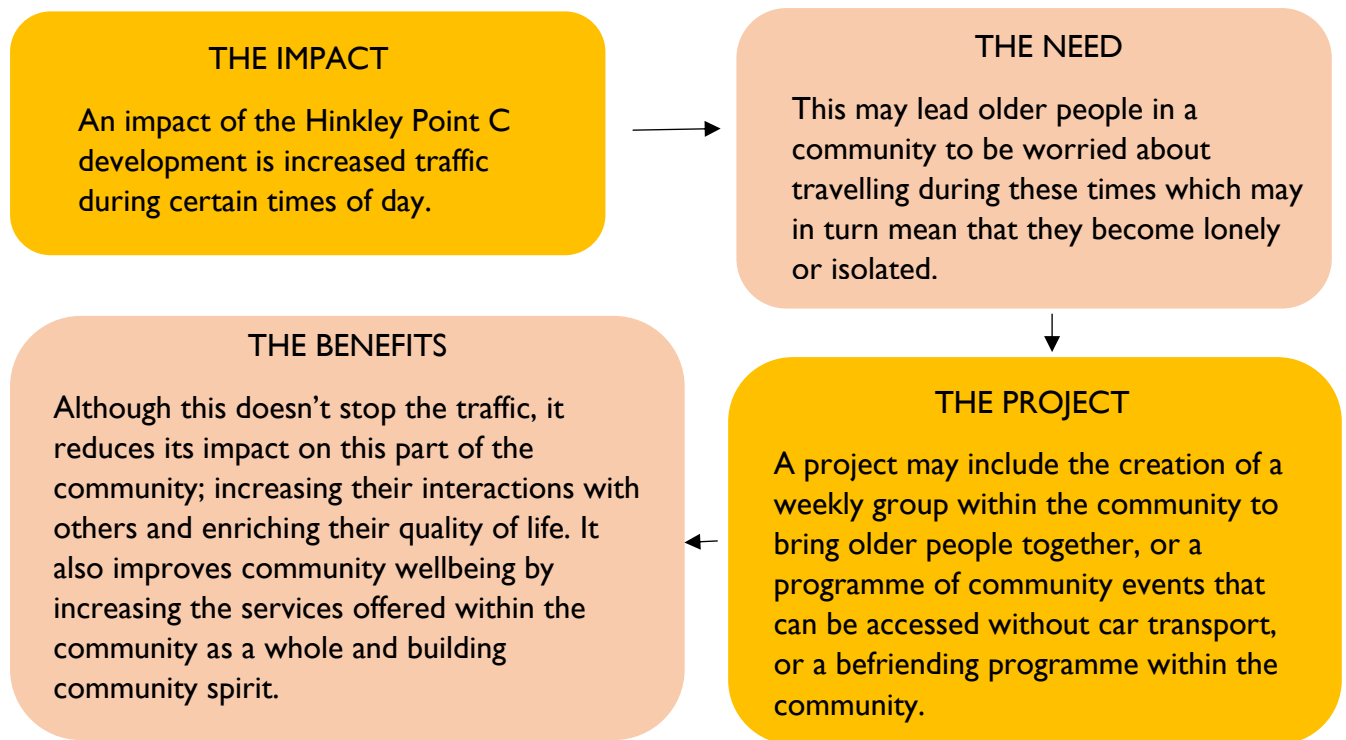
If you would like advice on the types of evidence you could use, or where to look for it, please contact us.

Building your case for support

The expression of interest form introduces your case for support to the Awards Panel.

Before you complete the questions, consider the connections between the **impact** from Hinkley Point C you are mitigating, the **community need** arising from it, the **project** you are proposing and how it will **avoid, reduce, improve or off-set** the impact, **meeting the need** and thereby **improving community wellbeing** and **enriching quality of life**.

The project you are proposing must be **in response** to the impact you have described and the community need that arises from it. Please have a look at the generic example below but do contact us if you would like to talk through your own case for support.



Section 3: Project Budget

Excluding VAT, please provide information on the costs of your project. The total project cost should be all the costs you expect to incur for this project. You should then identify how much you are applying to the Hinkley Point C Community Fund for and how much you have raised already, or are able to match fund.

You are strongly encouraged to seek match funding for your proposal. Please let us know if you have received any additional financial support prior to submitting your expression of interest and/or who you are intending to apply to.

After you have submitted your Expression of Interest

All Expressions of Interest will be considered by the Hinkley Point C Community Fund Awards Panel in the third week of January 2018. We aim to contact applicants by the 31st January 2018 if they are invited to submit a full application. The deadline for this will be at the end of April 2018.

Further guidance will be provided with the full application form.

PLEASE CONTACT US

We are happy to talk through your ideas and support you through the application process.

Val Bishop, Programmes Director

T: 01749 344949

E: val.bishop@somersetcf.org.uk

For further information on deadlines go to www.hpcfunds.co.uk